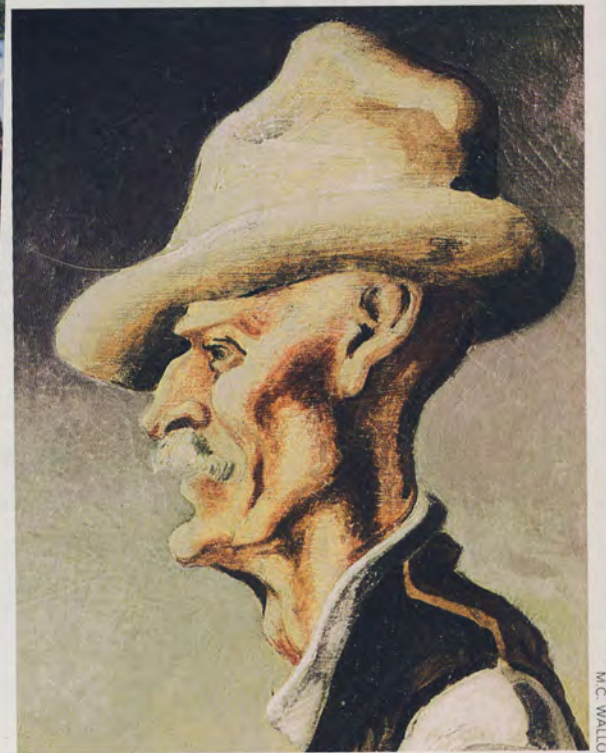


# JOSEPH "JOSIE" WEST

HOUSE: OLD WEST HOMESTEAD  
ABEL'S HILL LOT 25.9 J3  
PORTRAIT BY TOM BENTON  
ILLITERATE

WIFE: GEORGIANNA "GEORGIE"



Portrait, circa 1924, by artist Thomas Hart Benton, is of Josie West of Chilmark; courtesy of the Dukes County Historical Society.